

000.620 PD - 008 - BILL OF MATERIALS 4 LITE

ITEM NO.	DESCRIPTION	QUANTITY	PART NO.	FAB DWG. NO	SOURCE
1	FXD PNL TOP RAIL	2	10001102	10001102-F-01	A
2	STILE	4	10001102	10001102-F-01	A
3	BOTTOM RAIL	2	10001102	10001102-F-02	A
4	INTERLOCK	2	10001117	10001117-F-04	A
5	SCREW COVER	2	10001118	STRAIGHT CUT	A
6	GLAZING BEAD	8	10001111	10001111-F-01	A
7	STILE REINFORCEMENT - JAMB	2	10300150	STRAIGHT CUT	PPP
8	STILE REINFORCEMENT - INTERLOCK	2	10300151	STRAIGHT CUT	PPP
9	WEATHER-STRIPPING - 270 x .250	AS RECD	W21255MW		HHHH
10					
11	OPR PNL RAIL - TOP	2	10001102	10001102-F-01	A
12	STILE - INTERLOCK	2	10001102	10001102-F-03	A
13	STILE - ACTIVE LOCK	1	10001102	10001102-F-10	A
14	STILE - PASSIVE LOCK	1	10001102	10001102-F-16	A
15	RAIL - BOTTOM	2	10001102	10001102-F-05	A
16	4 LITE ASTRAGAL	1	10001116	10001116-F-01	A
17	INTERLOCK	2	10001117	10001117-F-02	A
18	SCREW COVER	2	10001118	STRAIGHT CUT	A
19	GLAZING BEAD	8	10001111	10001111-F-01	A
20	STILE REINFORCEMENT - INTERLOCK	2	10300151	STRAIGHT CUT	PPP
21	STILE REINFORCEMENT - ACTIVE LOCK	1	10300150	10300150-F-01	PPP
22	STILE REINFORCEMENT - PASSIVE LOCK	1	10300151	10300151-F-01	PPP
23	RAIL REINFORCEMENT - BOTTOM	2	10300152	10300152-F-01	PPP
24	WEATHER-STRIPPING - 270 x .250	AS RECD	W21255MW		HHHH
25					
26	MISC LOCK SET ASSEMBLY - 2817 LOCK W/TRIMPLATE	1	DECU-XXXX		F
27	HANDLE SET ASSEMBLY	2	DECU-XXXX1		F
28	HANDLE SET - INTERIOR SWITCH		DECU-XXXX2		
29	HANDLE SET - INTERIOR SWITCH / KEY		DECU-XXXX3		
30	HANDLE SET - BLANK		1988PRS166REVSS		
31	ROLLER ASSEMBLY - PRECISION 1.68" WHEEL	4	D8096AMWKC 0.810		HHHH
32	DRAFT PLUG - 810 DIA.	4	9946		D
33	3/8" HOLE PLUG	4	DECU-2808-94		F
34	KEEPER - 2778 KEEPER - STAINLESS STEEL	1	011H055-D		MMMM
35	IMPACT BRACKET	4			
36	1" INSULATED GLASS - NOTE <i>Refer to applicable test report</i>	5			
37	SETTING BLOCKS (REFER TO AS SUPPLIER GUIDELINES)	AS RECD			
38	GLAZING COMPOUND	AS RECD			
39					
40	SCREWS LOCK SET	4	#10 x 1.25" PFH - 410SS		
41	ROLLER ASSEMBLY	8	#8 x 3/4" PPH - 410SS		
42	REINFORCEMENT TO PANEL	AS RECD	#8 x 1" PFH - 410SS		
43	INTERLOCK	AS RECD	#8 x 5/8" PPH - 410SS		
44	4 LITE ASTRAGAL	AS RECD	#8 x 2" PPH - PAINTED		
45	KEEPER	4	#8 x 3" PPH - 410SS		
46	IMPACT BRACKET	15	#8 x 2.5" PFH - PAINTED		
47					

Element Materials Technology
 1924 Premier Row
 Orlando, FL 32809

ESP NO. ESP009169P-7
 Date Verified: 4/2/12

Verified By: [Signature]
 decceuninck
 NORTH AMERICA

NOTE LAMINATED GLASS UTILIZES .090" SOLUTIA PVB

REV	DATE	DESCRIPTION	BY

CONFIDENTIAL
 UNPUBLISHED WORK © 2010
 DECEUNINCK NORTH AMERICA

MONROE, OH
 000.620 PD - 008
 JGM
 000620PD-008

THIS DOCUMENT CONTAINS PROPRIETARY AND CONFIDENTIAL INFORMATION. DO NOT COPY OR DISCLOSE THIS INFORMATION WITHOUT THE EXPRESS WRITTEN CONSENT OF DECEUNINCK NORTH AMERICA. DECEUNINCK NORTH AMERICA RESERVES THE RIGHT TO CHANGE THIS DRAWING AND ANY ASSOCIATED DOCUMENTS

P-7

623.000 PD - 004 - BILL OF MATERIALS 3 & 4 LITE

ITEM NO.	DESCRIPTION	QUANTITY	PART NO.	FAB DWG. NO	SOURCE
1	HEAD	1	10001100	10001100-F-01	A
2	JAMB	2	10001100	10001100-F-05	A
3	EXTERIOR FRAME COVER	2	10001104	10001104-F-01	A
4	INTERIOR FRAME COVER	4	10001104	STRAIGHT CUT	A
5	SILL	1	10001101	10001101-F-01	A
6	SILL THRESHOLD	1	10300171	10300171-F-01	PPPP
7	SILL RISER	2	10001105	10001105-F-01	A
8	WEATHER-STRIPPING - .270 x .250	AS REQD	W21255MW		HHHH
9					
10	MISC				
11	SNUBBER	6	10300148	10300148-F-01	PPPP
12	ROLLER TRACK CAP	1	1A16719	STRAIGHT CUT	N
13	L - BRACKET	4	011H027		LLLL
14	SILL FRAME GASKET	2	G-A302-Z1-G600		CC
15	FRAME REINFORCEMENT	4	10300149	STRAIGHT CUT	PPPP
16	KEEPER	1			F
17	2778 KEEPER - YZD MILD STEEL		DECU-2808-00		
18	2778 KEEPER - STAINLESS STEEL		DECU-2808-84		
19	T - BRACKET	1 OR 2	10300213		DDDD
20	SCREEN KEEPER	1	011H040		MMMM
21	BUMPER STOP	2 OR 4	2152.525		
22	SCREWS				
23	SNUBBER	36	#8 x 1.25" PFH - 410SS		
24	L - BRACKET - SASH	8	#8 x 1" PFH - 410SS		
25	L - BRACKET - HEAD	8	#8 x 0.75" PFH - 410SS		
26	L - BRACKET - HEAD	8	#8 x 2.5" PFH - 410SS		
27	SILL RISER	4	#8 x 1.25" PFH - 410SS		
28	FRAME ASSEMBLY	12	#8 x 2.5" PPH - 410SS		
29	SCREEN KEEPER	2	#6 x .375" PPH		
30	T - BRACKET	8 OR 16	#8 x 2.5" PFH - 410SS		
31					

ELEMENT MATERIALS TECHNOLOGY

1924 Premier Row
Orlando, FL 32809

ESP NO. ESP-7
Date Verified: 11/13
Verified By: ES

deceuninck
NORTH AMERICA

MONROE, OH

COPYRIGHT 2010

NAME: 623.000 PD - 004

DWN BY: JGM

CHKD BY:

DWG NO. 623000PD-004

REV	DATE	DESCRIPTION	BY

THIS DOCUMENT CONTAINS PROPRIETARY AND CONFIDENTIAL INFORMATION. DO NOT COPY OR DISCLOSE THIS INFORMATION WITHOUT THE EXPRESS WRITTEN CONSENT OF DECEUNINCK NORTH AMERICA. DECEUNINCK NORTH AMERICA RESERVES THE RIGHT TO CHANGE THIS DRAWING AND ANY ASSOCIATED DOCUMENTS.

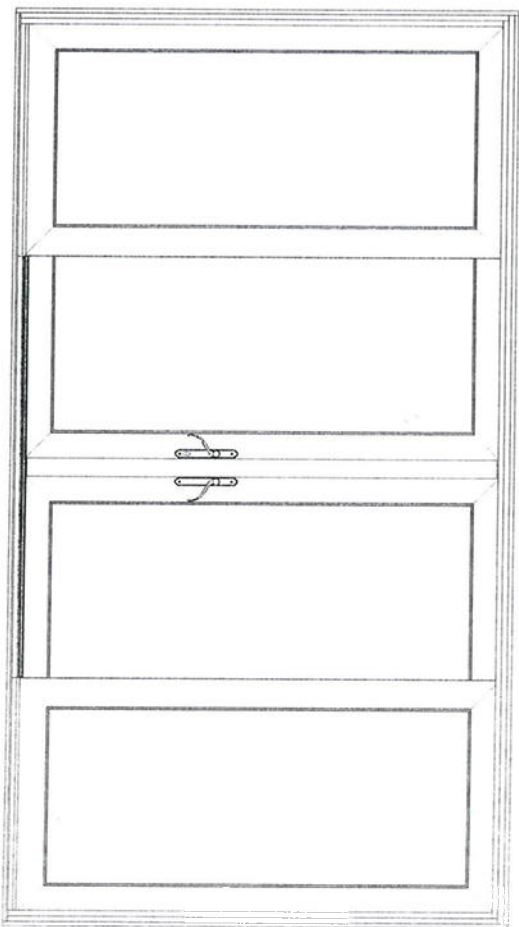
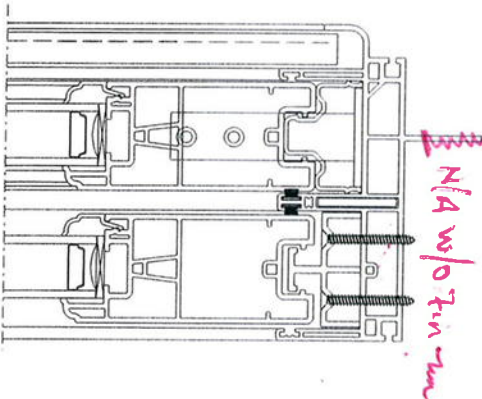
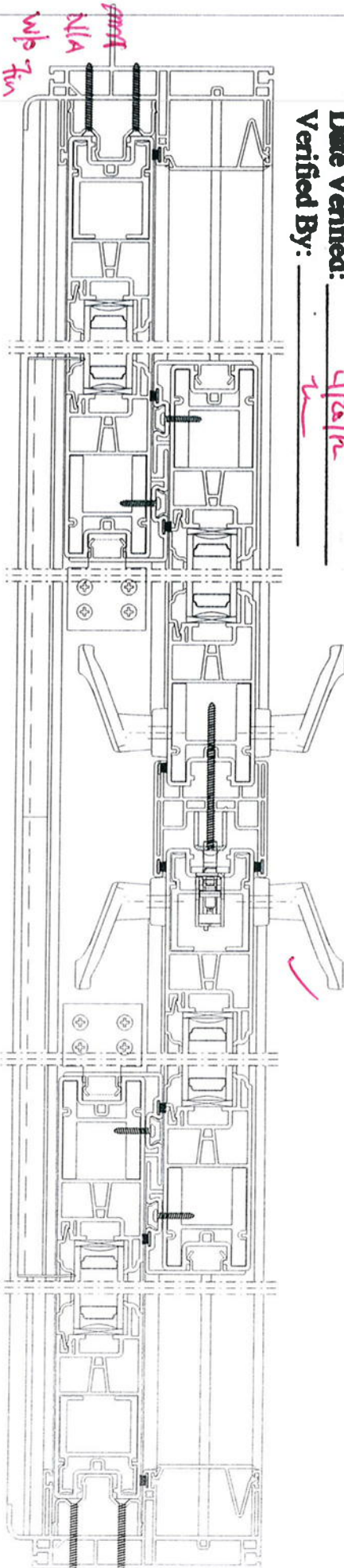
ELEMENT MATERIALS TECHNOLOGY
 1924 Premier Row
 Orlando, FL 32809

CAO USTANG, GAVES, SALL, &
 INCORPORATED BY THE DESIGN ACTIVITY.

ESP NO. ESPO9100P-7

Date Verified: 4/24/20

Verified By: TL



NOTES:
 1. REFER TO DRAWING ESTABLISHED FOR VERTICAL CROSS SECTION ONLY

CONFIDENTIAL

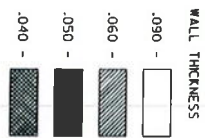
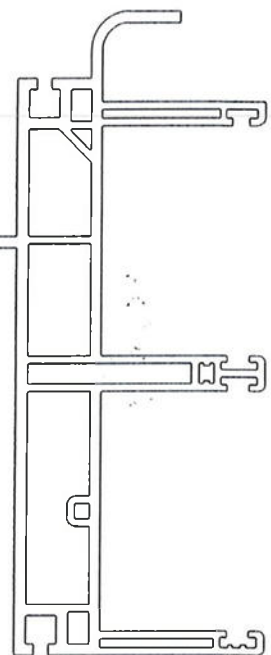
UNREGISTERED TRADE NAME
 UNREGISTERED TRADE NAME
 UNREGISTERED TRADE NAME
 UNREGISTERED TRADE NAME
 UNREGISTERED TRADE NAME

DATE: 4/24/20
 DRAWN BY: [Signature]
 CHECKED BY: [Signature]
 DESIGNED BY: [Signature]
 APPROVED BY: [Signature]

623620 FD 000

CAD MAINTAINED. CHANGES SHALL BE INCORPORATED BY THE DESIGN ACTIVITY.

REVISION HISTORY			
REV	DESCRIPTION	DATE	APPROVED
1	REMOVED INTERIOR WSS DIMENSIONS	10/05/26	DWB

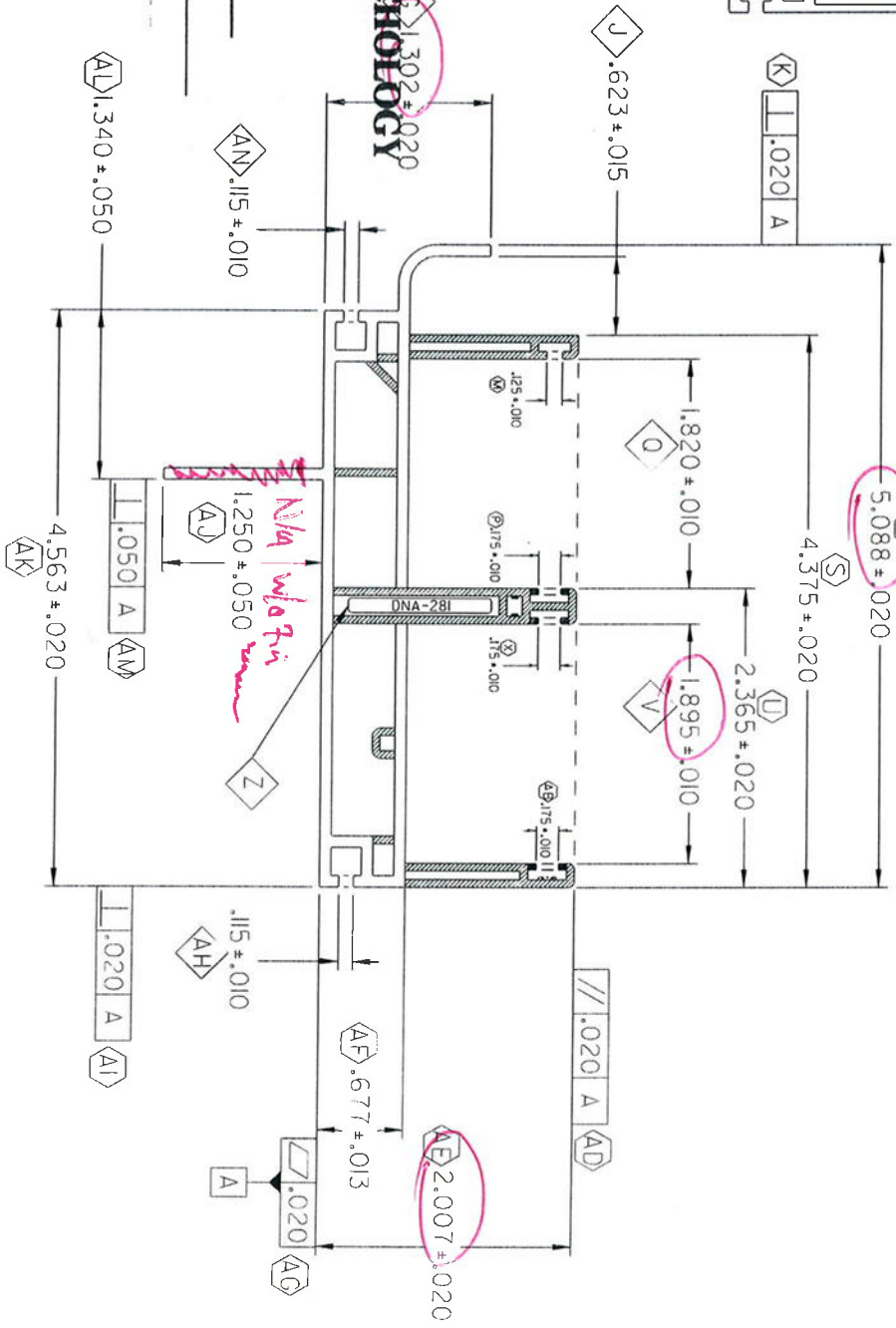


KEY PRODUCT CHARACTERISTICS

G	DIMENSION 1.282 - 1.322
J	DIMENSION .608 - .638
Q	DIMENSION 1.810
V	DIMENSION 1.885
Z	GAUGE DINA-28I
AH	DIMENSION .105 - .125
AN	DIMENSION .105 - .125

1924 Premier Row
Orlando, FL 32809

ESP NO. ESP00911007
Date Verified: 4/26/12
Verified By: _____



- NOTES:
1. 'STDD00013' STRAIGHTNESS CLASS A AND LENGTH TOLERANCES APPLY (A)
 2. INTERPRET ALL TOLERANCE APPLICATIONS PER STDD00013 (B)
 3. UNSPECIFIED EXTERNAL RADII = .XXX +.010 / -.005 (C)
 4. UNSPECIFIED INTERNAL RADII = .XXX +.020 / -.005 (D)
 5. UNSPECIFIED EXTERNAL WALL THICKNESS = .XXX +/- 10% (E)
 6. UNSPECIFIED INTERNAL WALL THICKNESS = .XXX +/- 20% (F)

CONFIDENTIAL
UNPUBLISHED WORK © 2010
DECEUNINCK NORTH AMERICA

THIS DOCUMENT CONTAINS PROPRIETARY AND CONFIDENTIAL INFORMATION. DO NOT COPY OR REPRODUCE WITHOUT THE WRITTEN PERMISSION OF DECEUNINCK NORTH AMERICA. DECEUNINCK NORTH AMERICA RESERVES THE RIGHT TO CHANGE THIS DRAWING AND ANY ASSOCIATED DOCUMENTS.

UNLESS OTHERWISE SPECIFIED DIM ARE IN INCHES ± .005 ANGLES ± .005°

2 PL: 0.010 AND 0.100 PER ASME Y14.5M - 1994

THIRD ANGLE PROJECTION

DESIGN BY:	CTC
DATE:	05/03/30
DRAWN BY:	CTC
DATE:	05/03/30
CHECKED BY:	
DATE:	
APPROVED BY:	
DATE:	

deceuninck NORTH AMERICA

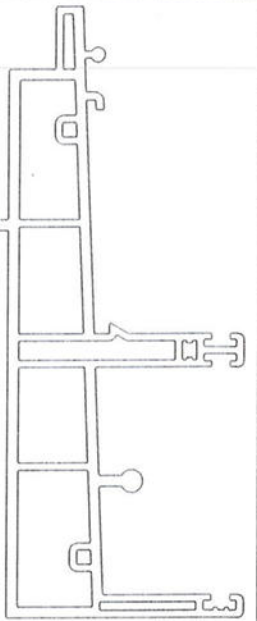
30 NORTH AVENUE, SUITE 200
MORRISVILLE, NC 27560

NAME: MAIN FRAME - PD

SCALE: 1:1

SHEET: 1 OF 1

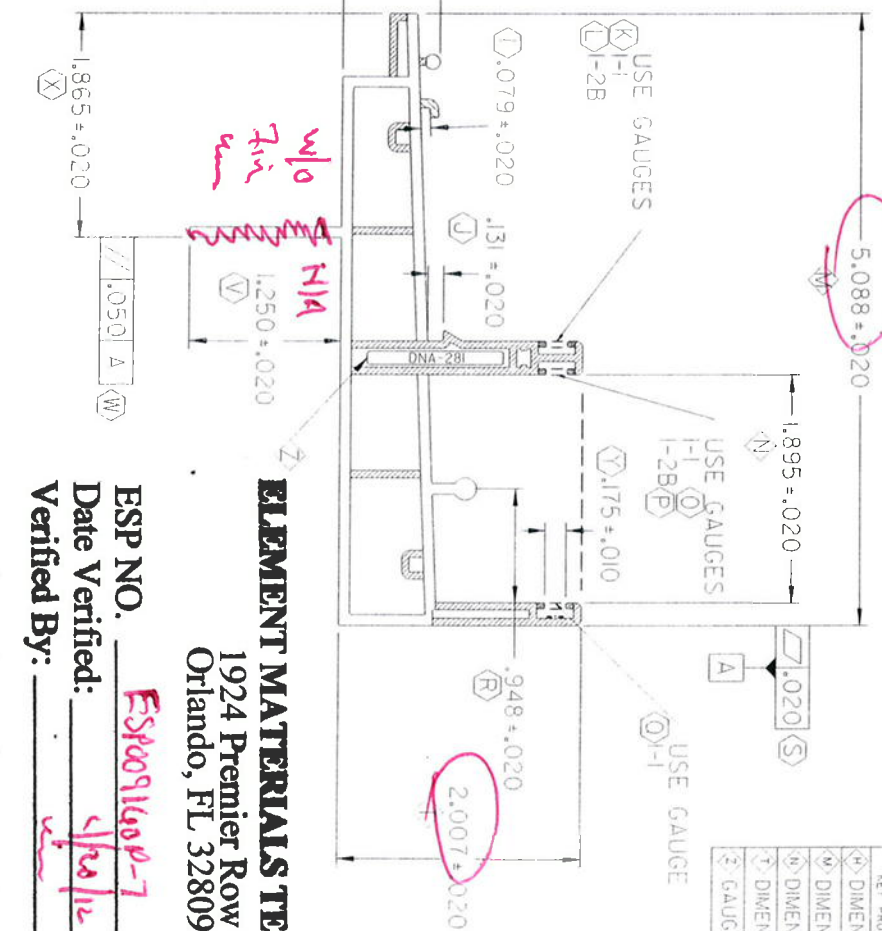
CAD MAINTAINED. CHANGES SHALL BE INCORPORATED BY THE DESIGN ACTIVITY.



N/A w/o Fin

REV	DESCRIPTION	DATE	APPROVED
H	CHANGED DATUM A TO THE SGE	11/05/05	BRB

REVISION HISTORY	
KEY PRODUCT CHARACTERISTICS	
① DIMENSION 5.068 - 5.108	
② DIMENSION 1.875 - 1.915	
③ DIMENSION 1.987 - 2.207	
④ GAUGE DINA-281	



ELEMENT MATERIALS TECHNOLOGY
 1924 Premier Row
 Orlando, FL 32809

ESP NO. ESP0091609-7
 Date Verified: 1/24/12
 Verified By: [Signature]

WALL THICKNESS

.090	[Blank]
.070	[Diagonal Hatching]
.060	[Diagonal Hatching]
.050	[Stippled]
.040	[Solid Black]

- NOTES:
1. STD00013' STRAIGHTNESS CLASS A AND LENGTH TOLERANCES APPLY **(A)**
 2. INTERPRET ALL TOLERANCE APPLICATIONS PER STD00013 **(B)**
 3. UNSPECIFIED EXTERNAL RADII = .XXX ± .010 / -.005 **(C)**
 4. UNSPECIFIED INTERNAL RADII = .XXX ± .020 / -.005 **(D)**
 5. UNSPECIFIED EXTERNAL WALL THICKNESS = .XXX ± /- .10% **(E)**
 6. UNSPECIFIED INTERNAL WALL THICKNESS = .XXX ± /- .20% **(E)**

CONFIDENTIAL

UNPUBLISHED WORK © 2011
 DECEUNINCK NORTH AMERICA

UNLESS OTHERWISE SPECIFIED
 DIM ARE IN INCHES
 2 PL ± 0.010° 3 PL ± 0.005°
 INTERPRET DIM AND TOL PER
 ASME Y14.5M - 1994

THIRD ANGLE PROJECTION

DESIGN BY:	RJC	DATE:	00/10/20
DRAWN BY: <td>PJC</td> <td>DATE: <td>00/10/20</td> </td>	PJC	DATE: <td>00/10/20</td>	00/10/20
AUTH: <td></td> <td>DATE: <td></td> </td>		DATE: <td></td>	
FILENAME: <td></td> <td>SCALE: <td>1:1</td> </td>		SCALE: <td>1:1</td>	1:1

deceuninck NORTH AMERICA

SILL FRAME - PD

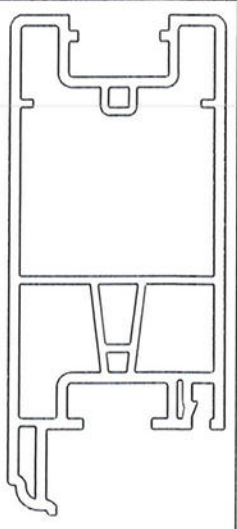
SCALE: 1:1

CALL MAINTAINED. CHANGES SHALL BE INCORPORATED BY THE DESIGN ACTIVITY.

ELEMENT MATERIALS TECHNOLOGY
 1924 Premier Row
 Orlando, FL 32809

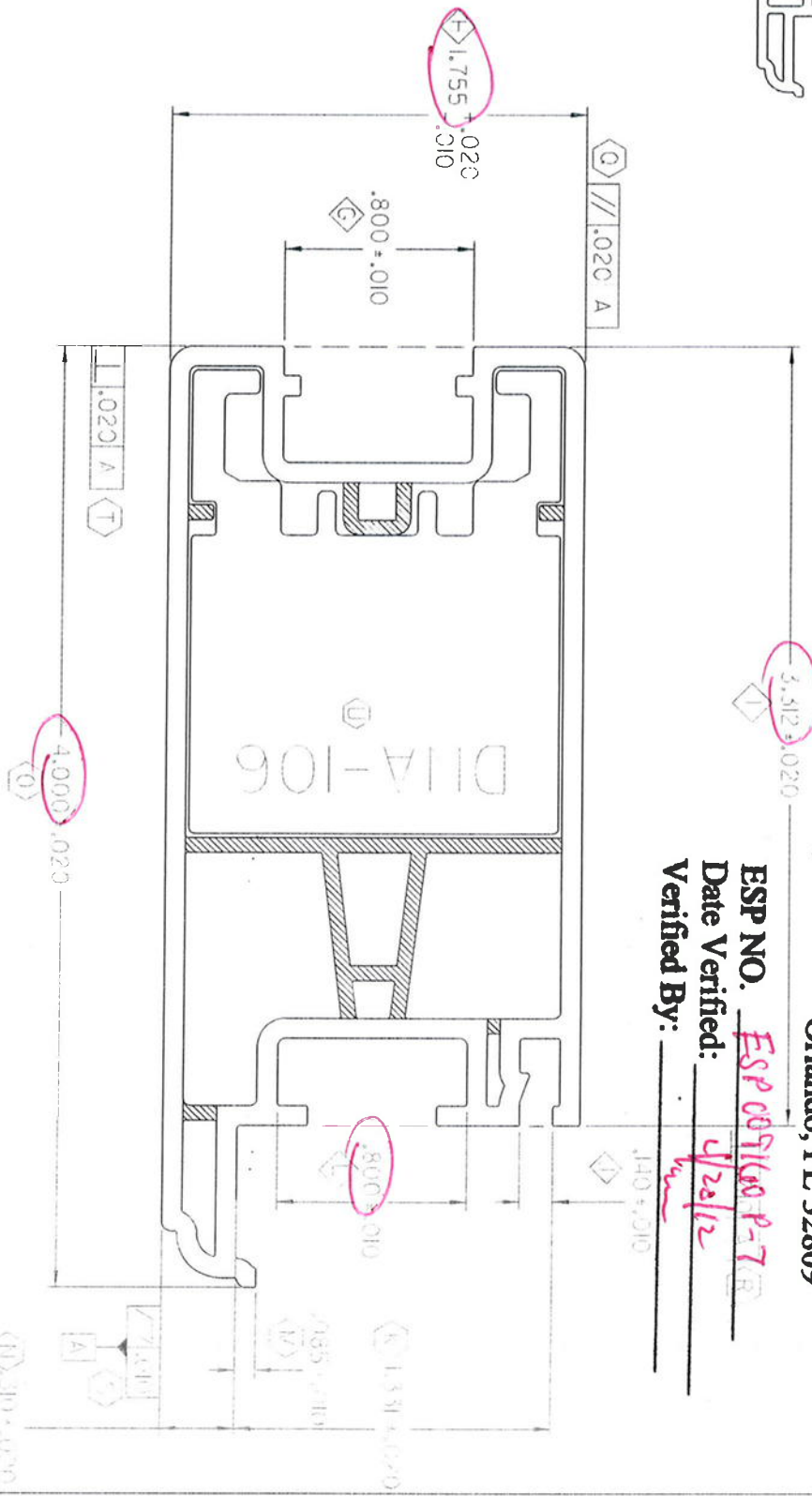
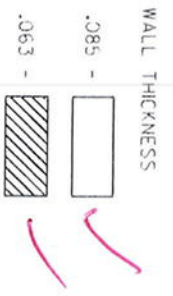
REV	DESCRIPTION	DATE	DESIGNED BY
1	INITIAL	11/22/2008	

SCALE 1:1



KEY PRODUCT CHARACTERISTICS

G	DIMENSION .790 - .510
H	DIMENSION 1.745 - 1.775
I	DIMENSION 3.292 - 3.332
J	DIMENSION .130 - .150
L	DIMENSION .790 - .910



ESP NO. ESP 0091600 P-7
 Date Verified: 4/20/12
 Verified By: [Signature]

- NOTES:
1. SIDDON0013 STRAIGHTNESS CLASS B AND LENGTH TOLERANCES APPLY (A)
 2. INTERPRET ALL TOLERANCE APPLICATIONS PER SIDDON0013 (B)
 3. UNSPECIFIED EXTERNAL RADIUS = .XXX +.010 / -.005 (C)
 4. UNSPECIFIED INTERNAL RADIUS = .XXX +.020 / -.005 (D)
 5. UNSPECIFIED EXTERNAL WALL THICKNESS = .XXX +/- 10% (E)
 6. UNSPECIFIED INTERNAL WALL THICKNESS = .XXX +/- 20% (F)

CONFIDENTIAL
 UNPUBLISHED WORK © 2008
 DECEUNINCK NORTH AMERICA

THIS DOCUMENT CONTAINS PROPRIETARY AND CONFIDENTIAL INFORMATION. DO NOT COPY OR DISCLOSE THIS INFORMATION WITHOUT THE EXPRESS WRITTEN CONSENT OF DECEUNINCK NORTH AMERICA. DECEUNINCK NORTH AMERICA RESERVES THE RIGHT TO CHANGE THIS DRAWING AND ANY ASSOCIATED DOCUMENTS.

UNLESS OTHERWISE SPECIFIED
 DIMENSIONS ARE IN INCHES
 TO 3 PLACES
 INTERPRET DIM AND TOL PER
 ASME Y14.5M - 1994

THIRD ANGLE PROJECTION

DESIGN BY:	SJD
DATE:	7/20/08/21
DRAWN BY:	SJD
DATE:	11/20/08/21
CHECKED BY:	
DATE:	
TECHNICAL:	
	84194

deceuninck **MANUFACTURED IN NORTH AMERICA**

MAIN SASP - 200

SCALE: 2:1



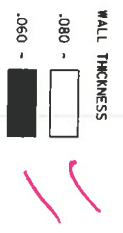
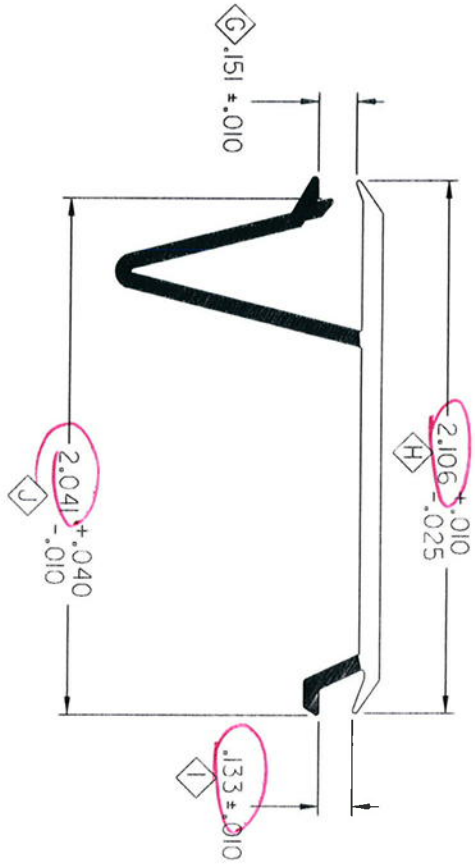
SCALE 1:1

CAD MAINTAINED. CHANGES SHALL BE INCORPORATED BY THE DESIGN ACTIVITY.
ELEMENT MATERIALS TECHNOLOGY
 1924 Premier Row
 Orlando, FL 32809

ESP NO. ESP091140P-7
 Date Verified: 4/16/12
 Verified By: [Signature]

REVISION HISTORY			
REV	DESCRIPTION	DATE	APPROVED
0	KPC	10/08/25	DWB

KEY PRODUCT CHARACTERISTICS	
G	DIMENSION 141 - .161
H	DIMENSION 2.091 - 2.116
I	DIMENSION 123 - .143
J	DIMENSION 2.031 - 2.081



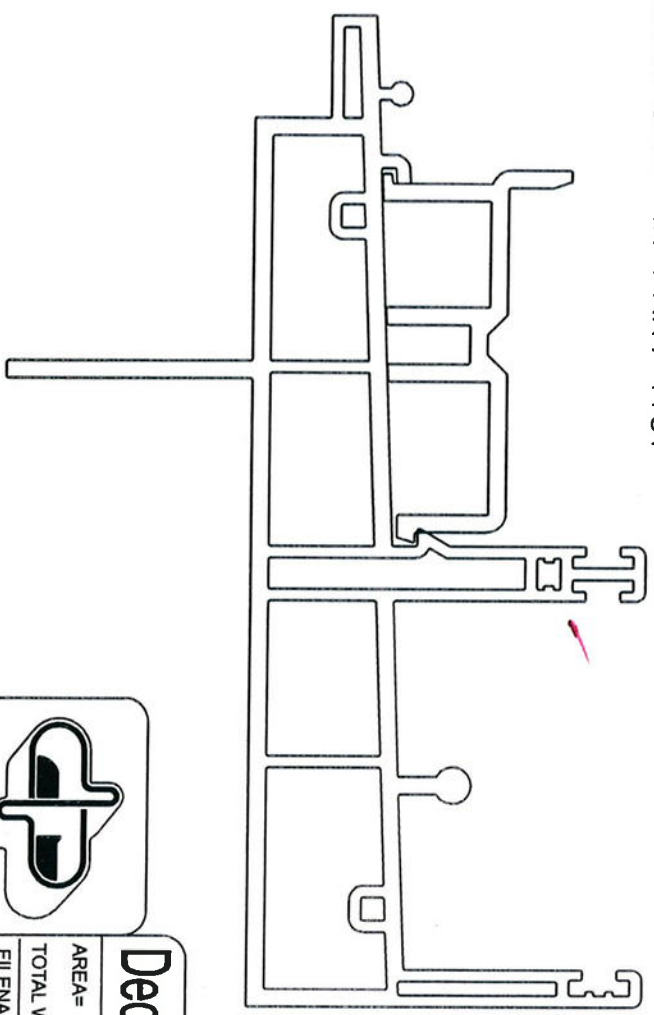
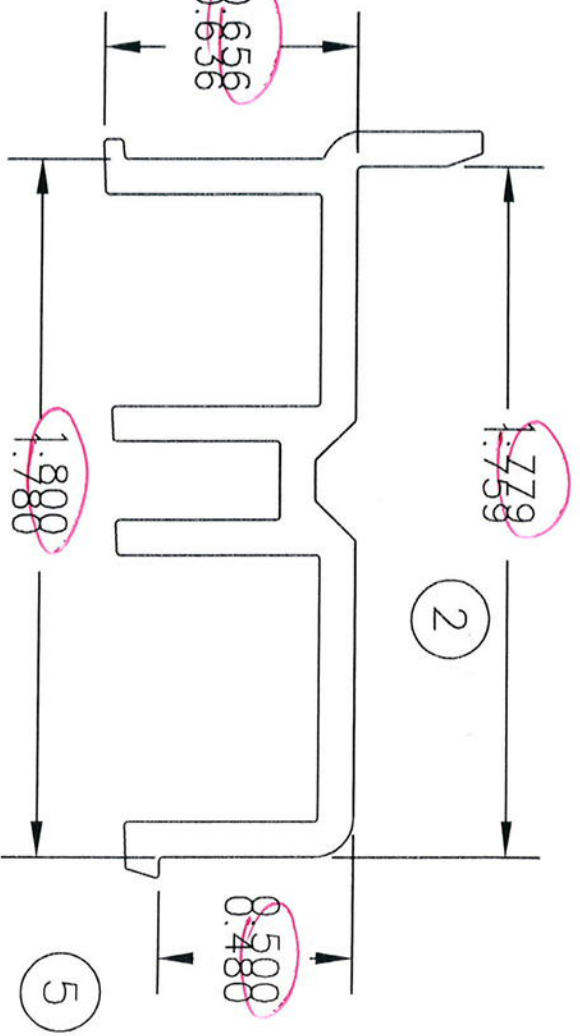
- NOTES:
1. STANDARD STRAIGHTNESS, CLASS E AND LENGTH TOLERANCES APPLY (A)
 2. INTERPRET ALL TOLERANCE SPECIFICATIONS PER STANDARD (B)
 3. UNSPECIFIED EXTERNAL RADIUS = .XXX ± .020 / -.005 (D)
 4. UNSPECIFIED INTERNAL RADIUS = .XXX ± .020 / -.005 (D)
 5. UNSPECIFIED EXTERNAL WALL THICKNESS = .XXX ± .020 (E)
 6. UNSPECIFIED INTERNAL WALL THICKNESS = .XXX ± .020 (E)

CONFIDENTIAL		UNLESS OTHERWISE SPECIFIED DIM ARE IN INCHES ± TOL. DIM ANGLES ± 0.005° INTERPRET DIM AND TOL PER ASME Y14.5M - 1994		DESIGN BY: CTC	DATE: 05/11/14
UNPUBLISHED WORK © 2010 DECEUNINCK NORTH AMERICA		THIRD ANGLE PROJECTION		DRAWN BY: CTC	DATE: 05/11/14
THIS DOCUMENT CONTAINS PROPRIETARY AND CONFIDENTIAL INFORMATION. DO NOT COPY OR EXPRESS OR IMPLIED INFORMATION WITHOUT THE EXPRESS WRITTEN CONSENT OF DECEUNINCK NORTH AMERICA. DECEUNINCK NORTH AMERICA RESERVES THE RIGHT TO CHANGE THIS DRAWING AND ANY ASSOCIATED DOCUMENTS.				AUTH: [Blank]	DATE: [Blank]
 deceuninck NORTH AMERICA 36 NORTH GREENWOOD MARIETTA, OHIO 45750		NAME: FRAME ADAPTOR SIZE/DWG. NO: 1000104-SH SCALE: 2:1 TBS/FTJ 187 SHEET: 10- 1		FILENAME: 102726	REV: 0

1 WALL THICKNESS
~~0.100~~
 0.080

6 CHECK SNAP IN PART 1101

3 ~~0.656~~



ELEMENT MATERIALS TECHNOLOGY
 1924 Premier Row
 Orlando, FL 32809
 ESP NO. ESP0091609-7
 Date Verified: 4/29/12
 Verified By: [Signature]



Deceuninck® NORTH AMERICA/Oakland N.J.
 AREA=
 TOTAL WEIGHT=
 TOL: ±0.010
 FILENAME:
 path
 BY CTC
 DATE 11/14/05
 MATTL PVC
 SCALE 2:1

SILL INSERT

REV	BY	APPVD	DATE	CHANGE
-----	----	-------	------	--------

10001105_SH

ELEMENT MATERIALS TECHNOLOGY
 1924 Premier Row
 Orlando, FL 32809

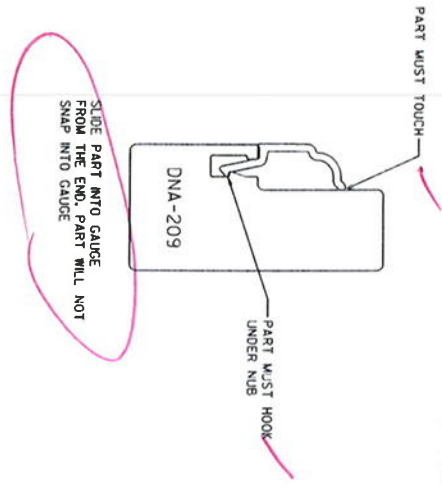
REVISION HISTORY
 UNPUBLISHED WORK © 2010
 DECEUNINCK NORTH AMERICA

REV	DESCRIPTION	DATE	APPROVED
E	CHANGED MYLAR		

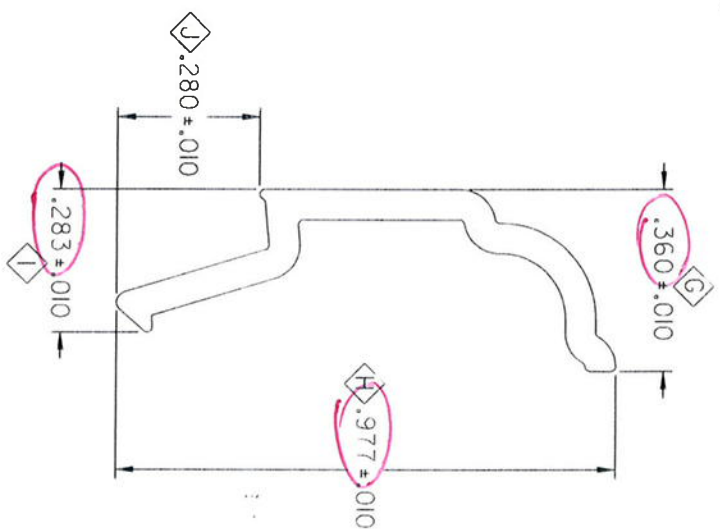
KEY	PRODUCT CHARACTERISTICS
G	GAUGE DNA-209
H	GAUGE DNA-209
I	GAUGE DNA-209
J	GAUGE DNA-209

ESP NO. ESP009160P-7
 Date Verified: 4/26/12
 Verified By: [Signature]

SCALE 1:1



WALL THICKNESS
 .060 - []



USE MYLAR 1000III,OP REV D

- NOTES
- STANDARD STRAIGHTNESS CLASS A AND LENGTH TOLERANCES APPLY
 - INTERPRET ALL TOLERANCE ASSIGNMENTS PER STANDARD
 - UNSPECIFIED INTERNAL RADI = .XXX +.020 / -.005
 - UNSPECIFIED INTERNAL WALL THICKNESS = .XXX +/- .02/E
 - UNSPECIFIED INTERNAL WALL THICKNESS = .XXX +/- .02/E

CONFIDENTIAL
 UNPUBLISHED WORK © 2010
 DECEUNINCK NORTH AMERICA

UNLESS OTHERWISE SPECIFIED DIMENSIONS ARE IN INCHES TO 01 ANGLES TO 2 PL ± 0.010° 3 PL ± 0.005° INTERPRET DIM AND TOL PER ASME Y14.5M - 1994

THIRD ANGLE PROJECTION

DESIGN BY: MC DATE: 00/12/01
 DRAWN BY: MC DATE: 00/12/01

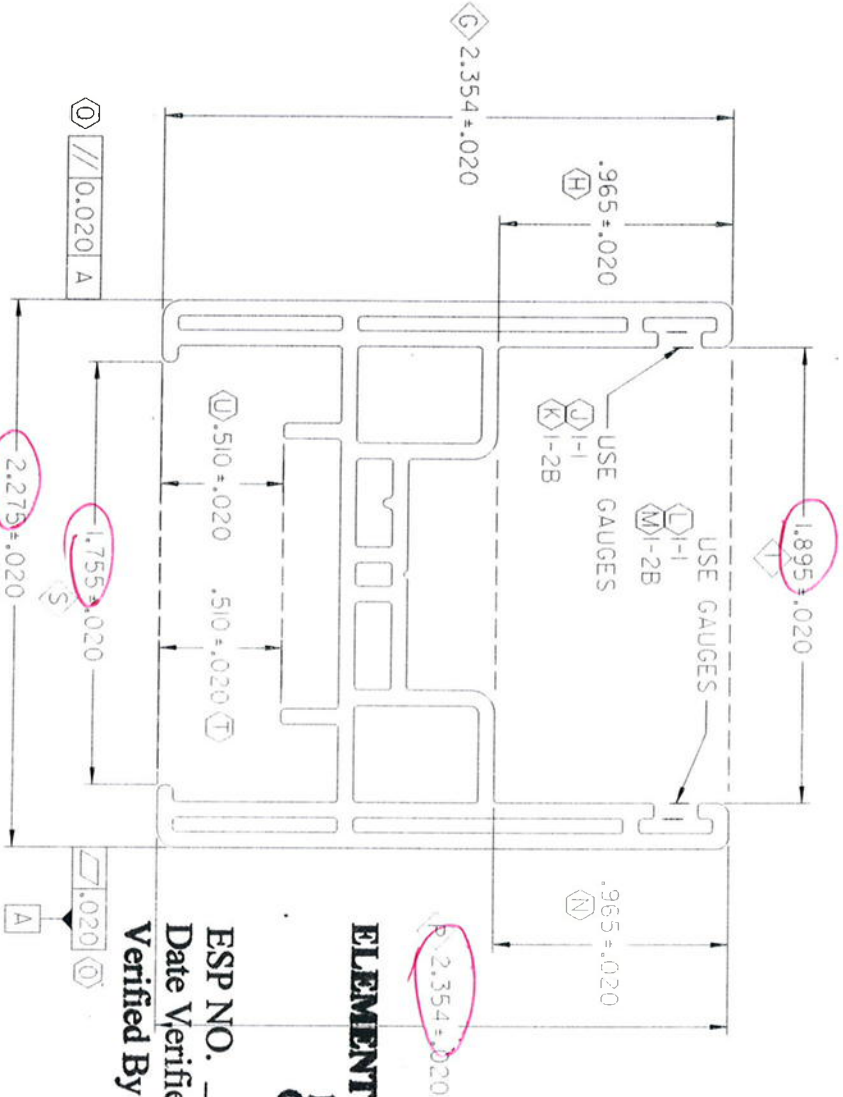
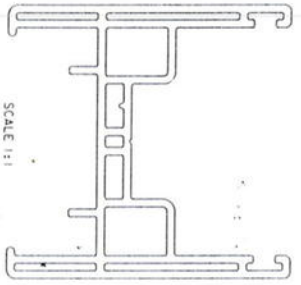
ADTH: DATE: FILENAME: 105341

NAME: **deceuninck** NORTH AMERICA
 20 NORTH LAMAR ROAD
 WILMINGTON, OH 45397

GLAZING BEAD

SIZE DWG. NO: 1000III_SH
 SCALE: 4:1 TBS/TTJ .049 SHEET: E

CAD MAINTAINED. CHANGES SHALL BE INCORPORATED BY THE DESIGN ACTIVITY.



REV	DESCRIPTION	DATE	APPROVED
C	KPC	10/08/27	BWB

KEY PRODUCT CHARACTERISTICS	DESCRIPTION	DATE	APPROVED
1	DIMENSION 2.354 - 2.374		
2	DIMENSION 1.875 - 1.915		
3	DIMENSION 2.334 - 2.374		
4	DIMENSION 2.255 - 2.295		
5	DIMENSION 1.735 - 1.775		

ELEMENT MATERIALS TECHNOLOGY
 1924 Premier Row
 Orlando, FL 32809

ESP NO. ESP009160 P-7
 Date Verified: 11/20/12
 Verified By: [Signature]

- NOTES:
1. STD00013 STRAIGHTNESS CLASS C AND LENGTH TOLERANCES APPLY (A)
 2. INTERPRET ALL TOLERANCE APPLICATIONS PER STD00013 (B)
 3. UNSPECIFIED EXTERNAL RADII = .XXX +.010 / -.005 (C)
 4. UNSPECIFIED INTERNAL RADII = .XXX +.020 / -.005 (D)
 5. UNSPECIFIED EXTERNAL WALL THICKNESS = .XXX +/- .10% (E)
 6. UNSPECIFIED INTERNAL WALL THICKNESS = .XXX +/- .20% (F)

CONFIDENTIAL
 UNPUBLISHED WORK © 2010
 DECEUNINCK NORTH AMERICA

THIS DOCUMENT CONTAINS PROPRIETARY AND CONFIDENTIAL INFORMATION. DO NOT COPY, REPRODUCE, OR DISCLOSE THIS INFORMATION WITHOUT THE EXPRESS WRITTEN CONSENT OF DECEUNINCK NORTH AMERICA. DECEUNINCK NORTH AMERICA RESERVE ALL RIGHTS IN THIS DRAWING AND ANY ASSOCIATED DOCUMENTS.

UNLESS OTHERWISE SPECIFIED
 DIM. ARE IN INCHES
 2 PL. ± 0.010° 3 PL. ± 0.005°
 INTERPRET DIM AND TOL. PER
 ASME Y14.5M - 1994

THIRD ANGLE PROJECTION

DESIGN BY:	DATE:	DESIGN BY:	DATE:
CTC	05/11/14	CTC	05/11/14
DATE:	05/11/14	DATE:	05/11/14
DATE:		DATE:	
DATE:		DATE:	
DATE:		DATE:	

deceuninck NORTH AMERICA

31 NORTH GARDNER ROAD
 CORONA DEL MAR, CA 92625

NAME: **SASH ADAPTOR**

SCALE: 2:1

SHEET: 622

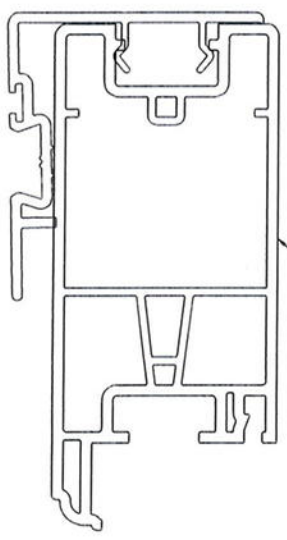
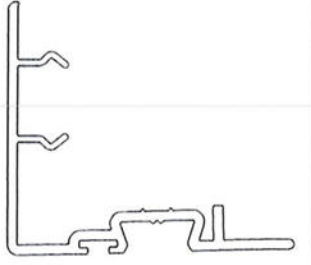
DATE: 10/27/12

CAD MAINTAINED. CHANGES SHALL BE INCORPORATED BY THE DESIGN ACTIVITY.

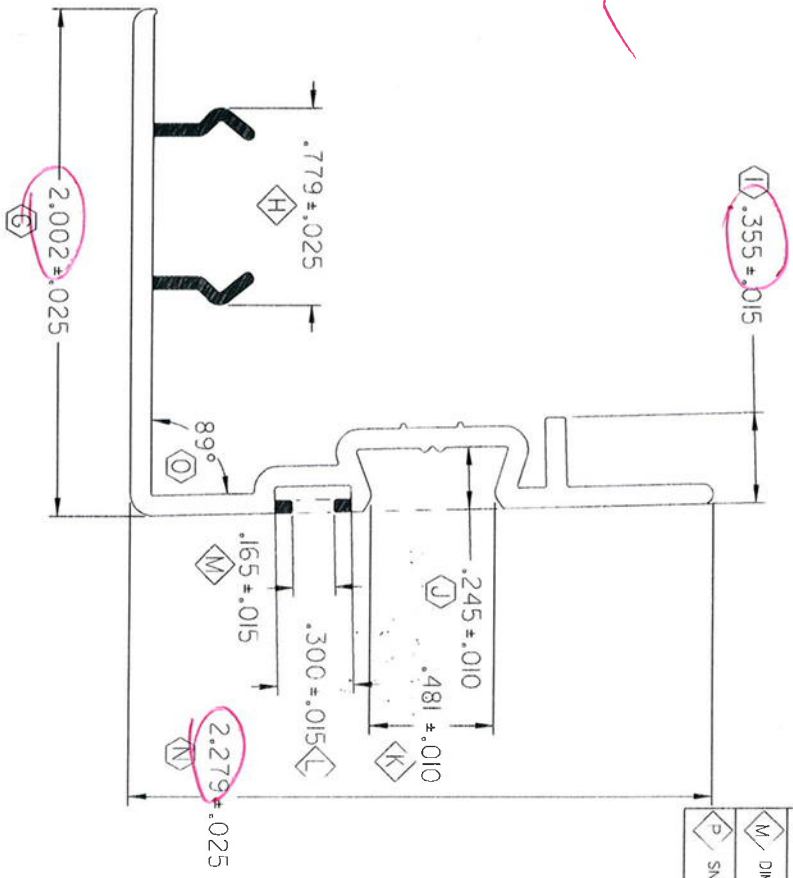
ELEMENT MATERIALS TECHNOLOGY

1924 Premier Row
Orlando, FL 32809

ESP NO. ESP0011008-7
Date Verified: 4/25/12
Verified By: h



WALL THICKNESS
.080 -
.050 -



REVISION HISTORY			
REV	DESCRIPTION	DATE	APPROVED
E	KAC	10/08/27	BMB

KEY PRODUCT CHARACTERISTICS	
H	DIMENSION .754 - .804
K	DIMENSION .471 - .491
L	DIMENSION .285 - .315
M	DIMENSION .150 - .180
P	SNAP CONDITION

- NOTES:
1. ST000013' STRAIGHTNESS CLASS A AND LENGTH TOLERANCES APPLY
 2. INTERPRET ALL TOLERANCE APPLICATIONS PER ST00013
 3. UNPUBLISHED WORK - INTERNAL RADIUS = .XXX +.010 / -.005
 4. UNPUBLISHED WORK - INTERNAL WALL THICKNESS = .XXX +.020 / -.005
 5. UNPUBLISHED WORK - EXTERNAL WALL THICKNESS = .XXX +/- .020
 6. UNPUBLISHED WORK - EXTERNAL WALL THICKNESS = .XXX +/- .20Z

CONFIDENTIAL
UNPUBLISHED WORK © 2010
DECEUNINCK NORTH AMERICA

THIS DOCUMENT CONTAINS PROPRIETARY AND CONFIDENTIAL INFORMATION. DO NOT COPY OR REPRODUCE THIS INFORMATION WITHOUT THE EXPRESS WRITTEN PERMISSION OF DECEUNINCK NORTH AMERICA. DECEUNINCK NORTH AMERICA RESERVES THE RIGHT TO CHANGE THIS DRAWING AND ANY ASSOCIATED DOCUMENTS.

UNLESS OTHERWISE SPECIFIED
DIM ARE IN INCHES
TOL. ON ANGLES = .005°
INTERPRET DIM AND TOL PER
ASME Y14.5M - 1994

THIRD ANGLE PROJECTION

DESIGN BY:		PGM	
DATE:	06/12/22	DATE:	06/12/22
DRAWN BY:	JJM	DATE:	07/01/02
DATE:	07/01/02	DATE:	
AUTH:		DATE:	
AUTH:		DATE:	
FILENAME:		FILENAME:	
FILE NAME:		FILE NAME:	

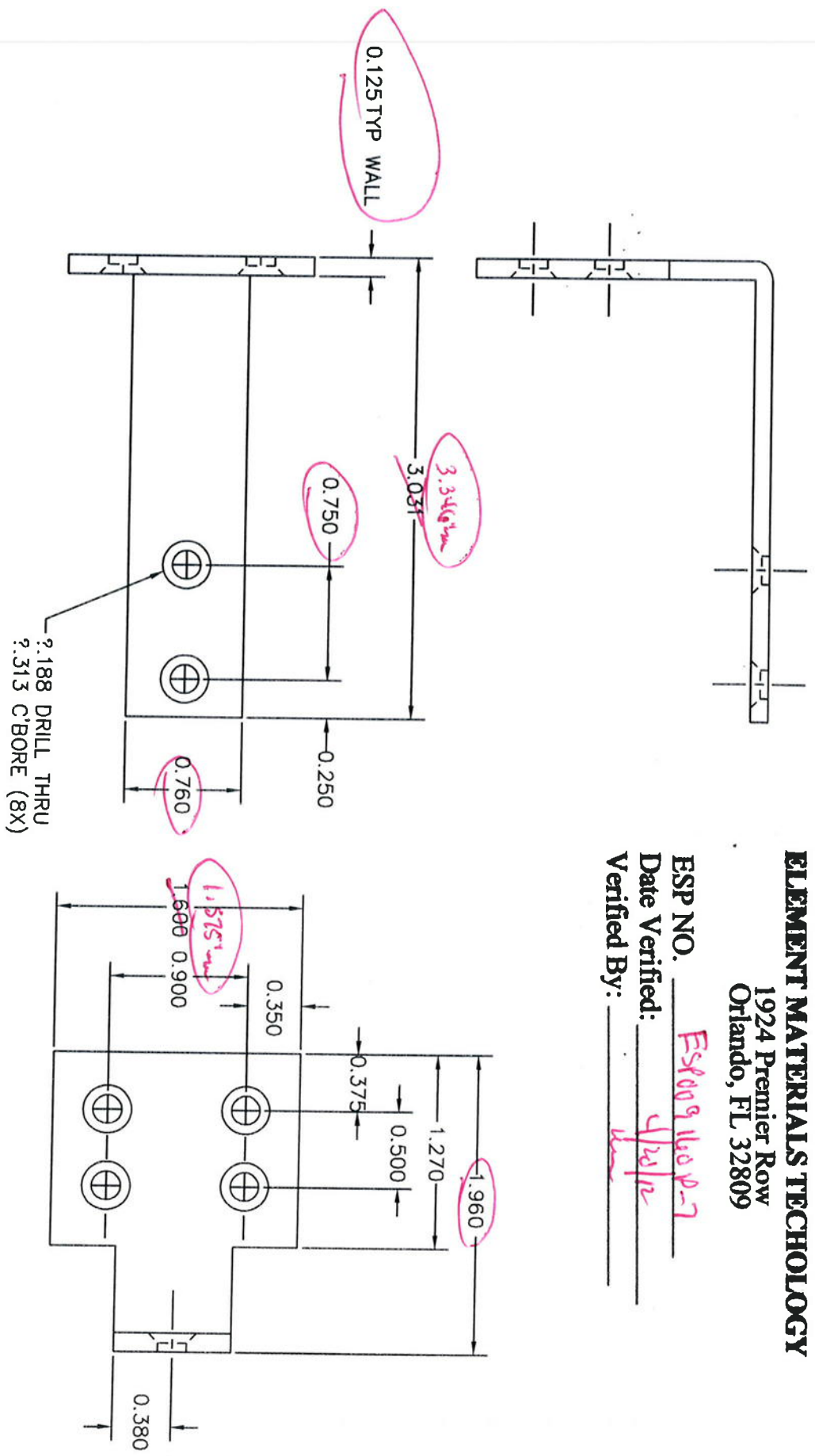
NAME: **deceuninck** 201 NORTH GAVEN ROAD
NORTH AMERICA WOODBRIDGE, OH 44099

SASH ADAPTER

SIZE/DWG. NO: 1000117.SH
SCALE: 2:1
SHEET: 1 OF 1

ELEMENT MATERIALS TECHNOLOGY
 1924 Premier Row
 Orlando, FL 32809

ESP NO. ESP0091600-7
 Date Verified: 4/26/12
 Verified By: [Signature]



Vinylina®

VINYL BUILDING PRODUCTS INC.

AREA = _____
 WEIGHT = _____

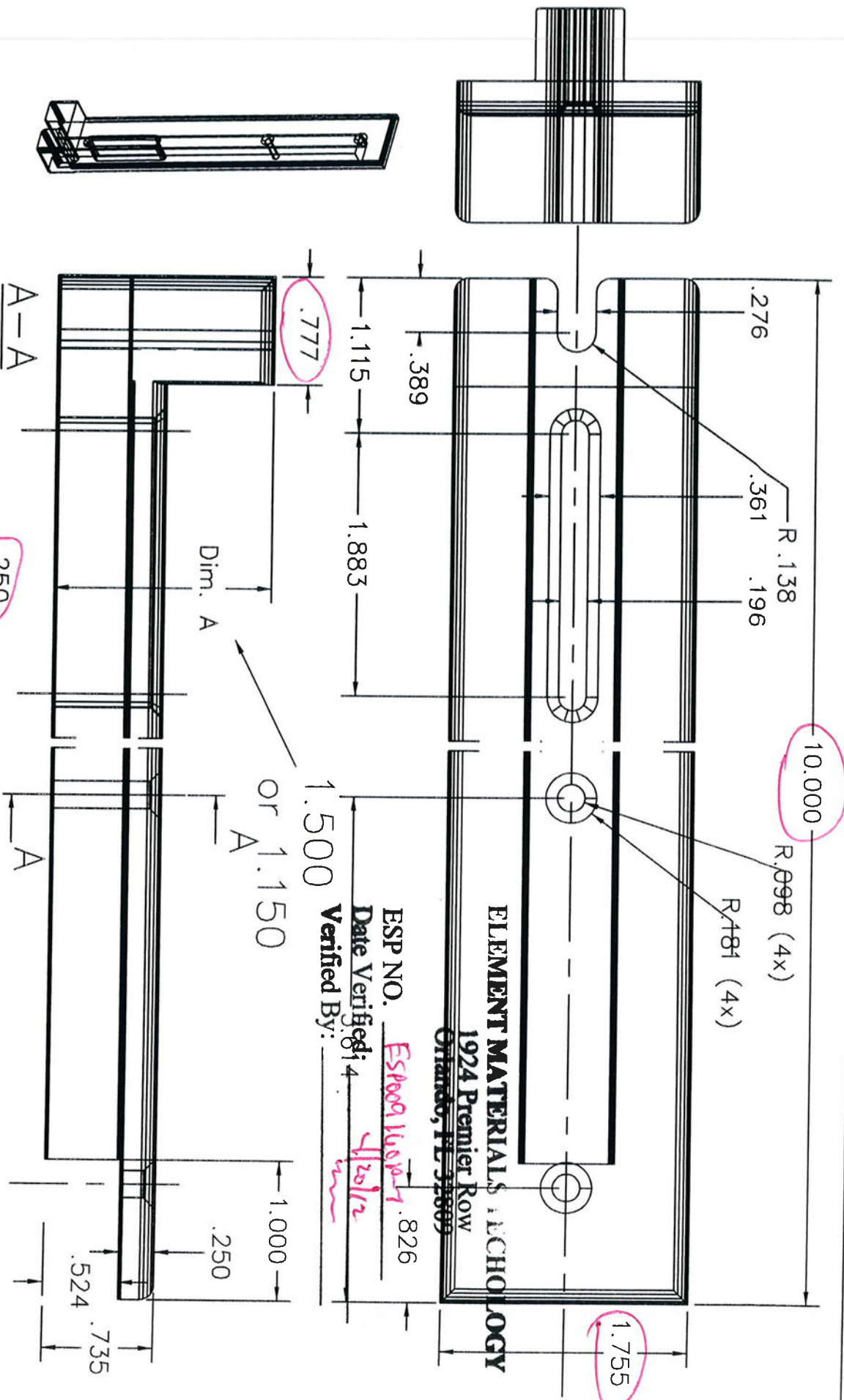
TOLERANCES (EXCEPT AS NOTED)
 ±0.010

DRAWN	MG	DATE	10/29/01	APPVD		MAT'L	6063-T6	SCALE	1/1
-------	----	------	----------	-------	--	-------	---------	-------	-----

BRACKET

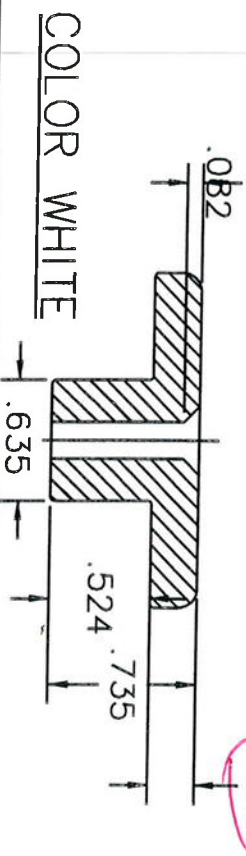
011H027

REV	BY	APPVD	DATE	CHANGE
-----	----	-------	------	--------



ESP NO. ESP00911600-1 .826
 Date Verified: 4/12/12
 Verified By: _____

1.500
 or 1.150



COLOR WHITE

REV	BY	APPVD	DATE	CHANGE

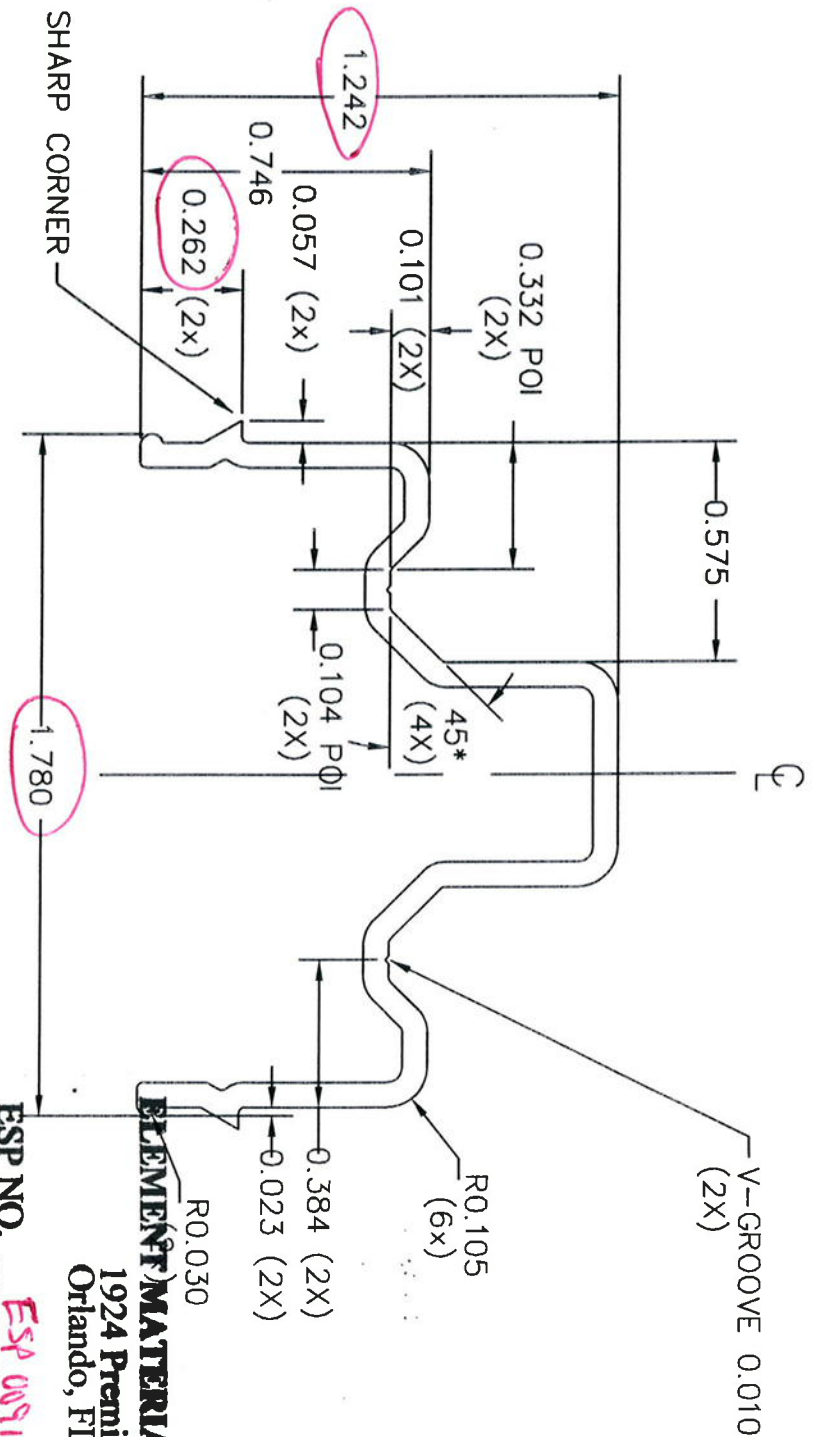
Vinylina®

VINYL BUILDING PRODUCTS INC.

AREA = 8.109 cub in
 WEIGHT =

TOLERANCES (EXCEPT AS NOTED)
 ±0.010

DRAWN	MG	DATE	APPVD	MAT'L	SCALE
		2/25/05		NYLON	1/1
BRACKET					
011h055-D					

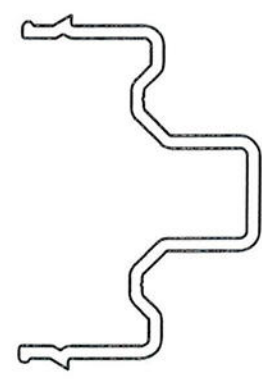


ACTUAL SIZE
NO EXPOSED SURFACES

- NOTES:
1. ALL UNSPECIFIED RADII 0.015.
 2. ALC04 P/N 23111 (WHITE P-001, DESERT SAND P-029).

ELEMENT MATERIALS TECHNOLOGY
1924 Premier Row
Orlando, FL 32809

ESP NO. ESP 009169 P-7
Date Verified: 4/24/12
Verified By: _____



Vinyline® VINYL BUILDING PRODUCTS INC.

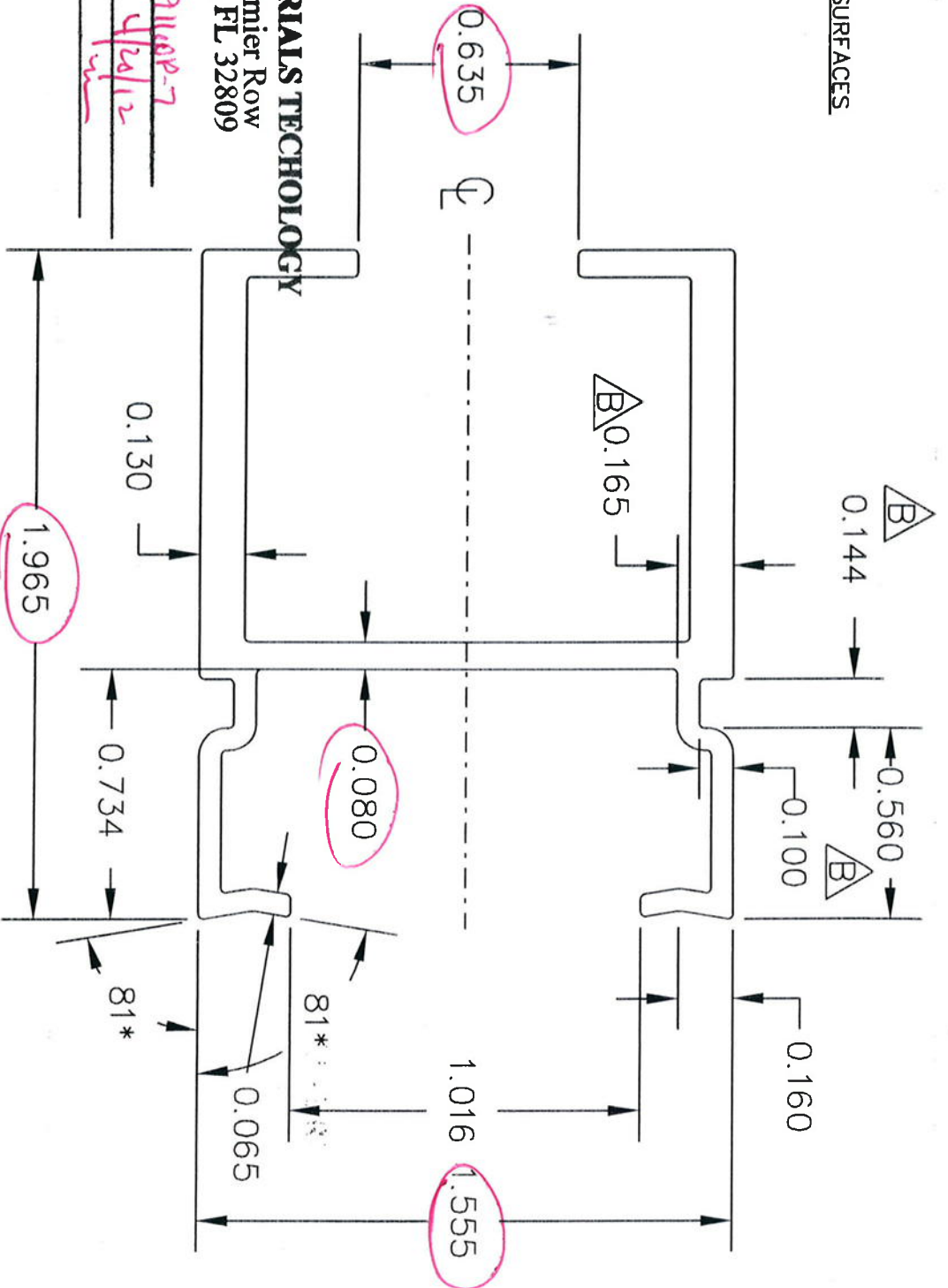
AREA= 0.269 sq in
WEIGHT= 0.316 lb/ft

TOLERANCES (EXCEPT AS NOTED)
±0.010

DRAWN	M/G	DATE	APPVD	MATL	SCALE
		10/28/3		8061-16,6105-15	2/1

REV	BY	APPVD	DATE	CHANGE
				SNUBBER
				10300148

NO EXPOSED SURFACES



ELEMENT MATERIALS TECHNOLOGY

1924 Premier Row
Orlando, FL 32809

ESP NO. ESP0911007-7
Date Verified: 4/24/12
Verified By: _____

- NOTES:
1. ALL UNSPECIFIED RADII ARE 0.015.

2. MAKE FROM EITHER 6061-T6 or 6105-T6 ALUMINUM.
3. ALCOA PART NUMBER 23441.

DNA# 10300150

B	CC	10/28/04	Renamed drawing 011H035B Dimension change
A	AL	6/4/04	CHANGED MATERIAL SPECS TO MAKE FROM EITHER 6061-T6 or 6105-T6 ALUMINUM
REV	BY	APPV'D	DATE
			CHANGE



VINYL BUILDING PRODUCTS INC.
AREA = .612 sq in.
TOTAL WEIGHT = .7175 lb/ft.
TOLERANCE ±0.010

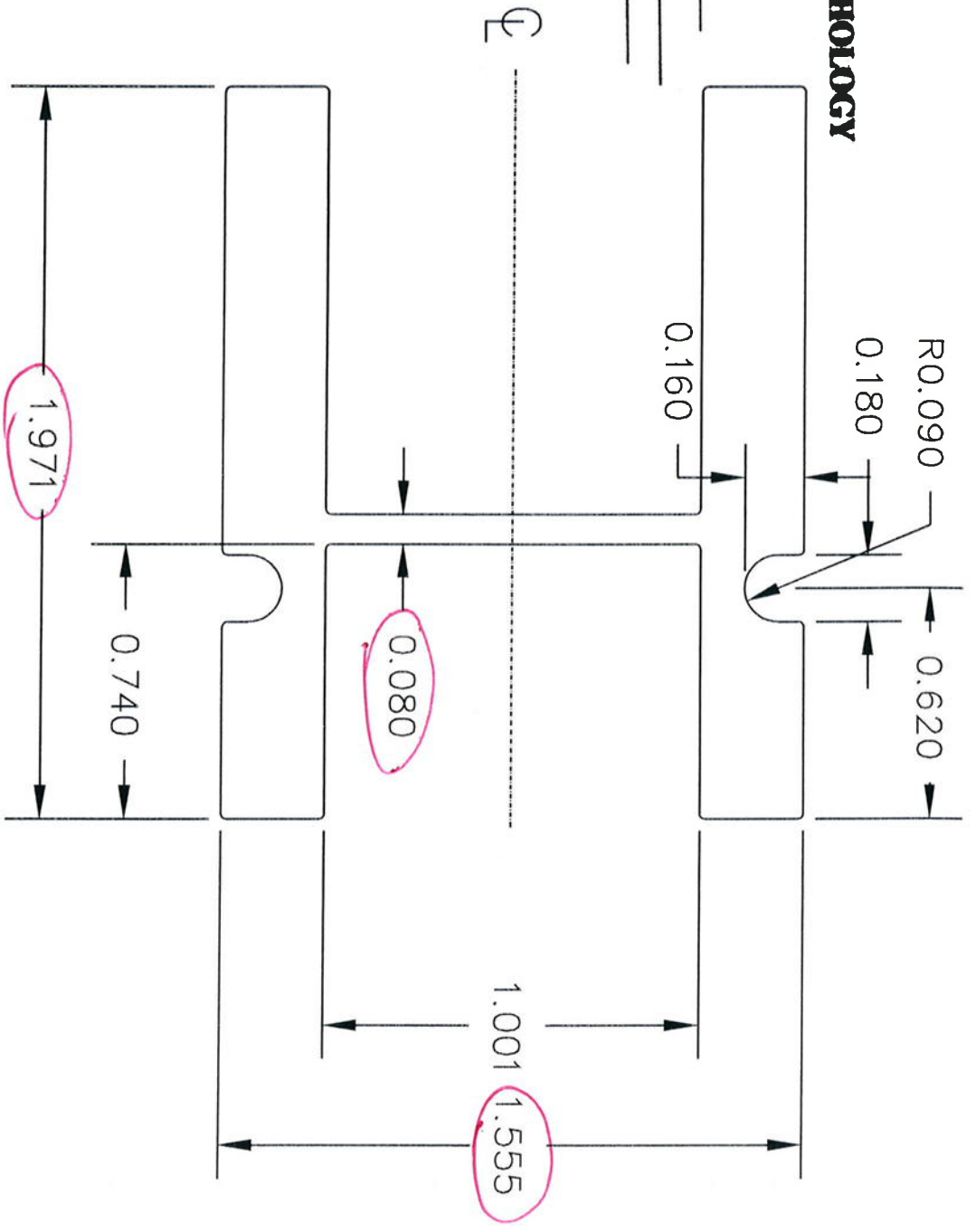
DRAWN	CTC	DATE	10/28/04	APPV'D	MAT'L	Al 6105 T-6	SCALE	2:1
Sash Reinforcement				10300150				

NO EXPOSED SURFACES

ELEMENT MATERIALS TECHNOLOGY

1924 Premier Row
Orlando, FL 32809

ESP NO. Espe09 Vesp-7
Date Verified: 4/26/12
Verified By: _____



NOTES:
1. ALL UNSPECIFIED RADII ARE 0.015.

Vinylines® VINYL BUILDING PRODUCTS INC.
 AREA = 1.121
 WEIGHT = 1.316 lb/ft
 TOLERANCES (EXCEPT AS NOTED)
 ? .010 [0.25]

REV	BY	APPV'D	DATE	CHANGE
DRAWN MG DATE 02/05/03 APPV'D MAT'L 6T05-15 6061-T6 SCALE 2/1				
SASH REINFORCEMENT XHD A 10300151				

THIS MATERIAL IS PROPRIETARY & CONFIDENTIAL TO VINYL BUILDING PRODUCTS INC. AND SHALL NOT BE REPRODUCED, COPIED, OR DISSEMINATED WITHOUT THE EXPRESSED WRITTEN PERMISSION OF VINYL BUILDING PRODUCTS INCORPORATED.

011H074

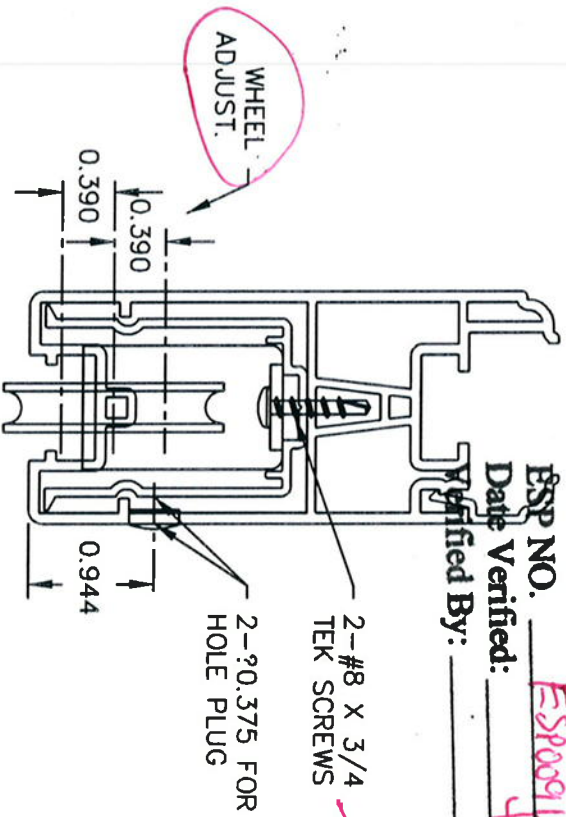
ELEMENT MATERIALS TECHNOLOGY

1924 Premier Row
Orlando, FL 32809

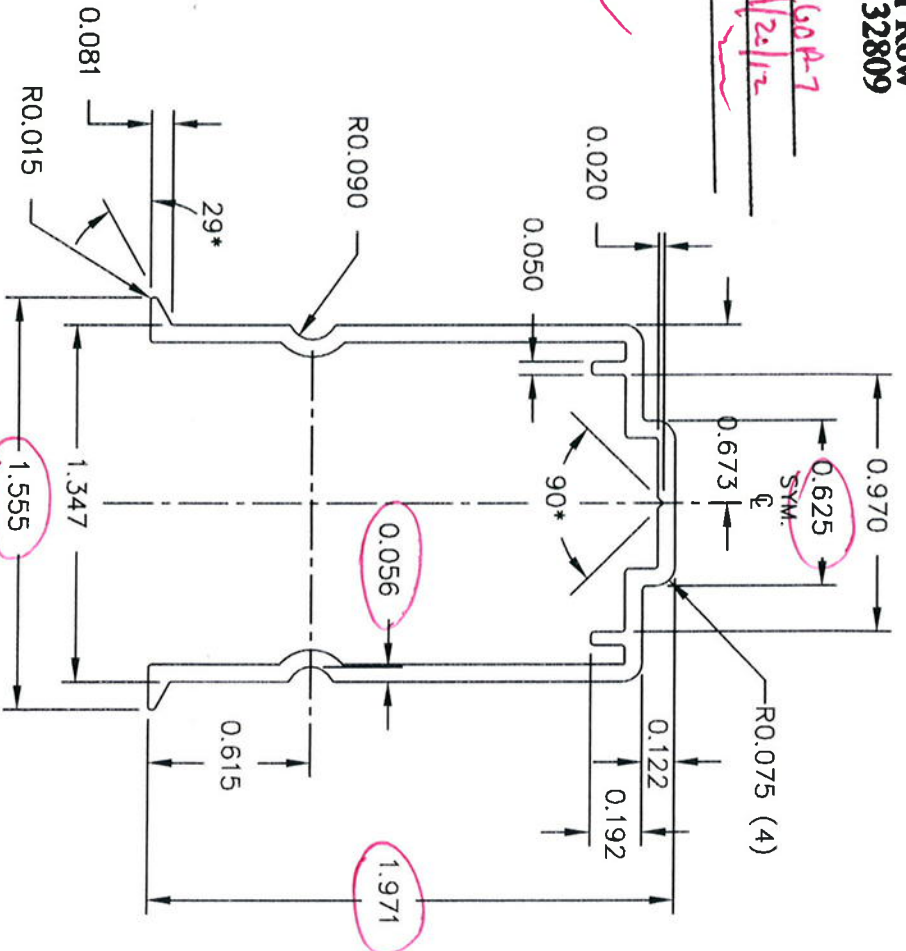
ESEP NO. ES8009160A-7

Date Verified: 4/2/12

Verified By: _____



PARTS ASSEMBLY
SCALE: 1/2



NOTES:

1. MATERIAL: ALUM. 6005-T5, 6061-T6 or 6105-T5.
2. UNSPECIFIED WALL THICKNESS = .065".
3. BREAK ALL CORNERS R0.015.
4. NO EXPOSED SURFACES.
5. MOMENTS OF INERTIA: I_{xx}=.147; I_{yy}=.118.

DEPLIS# 10300152



deceuninck

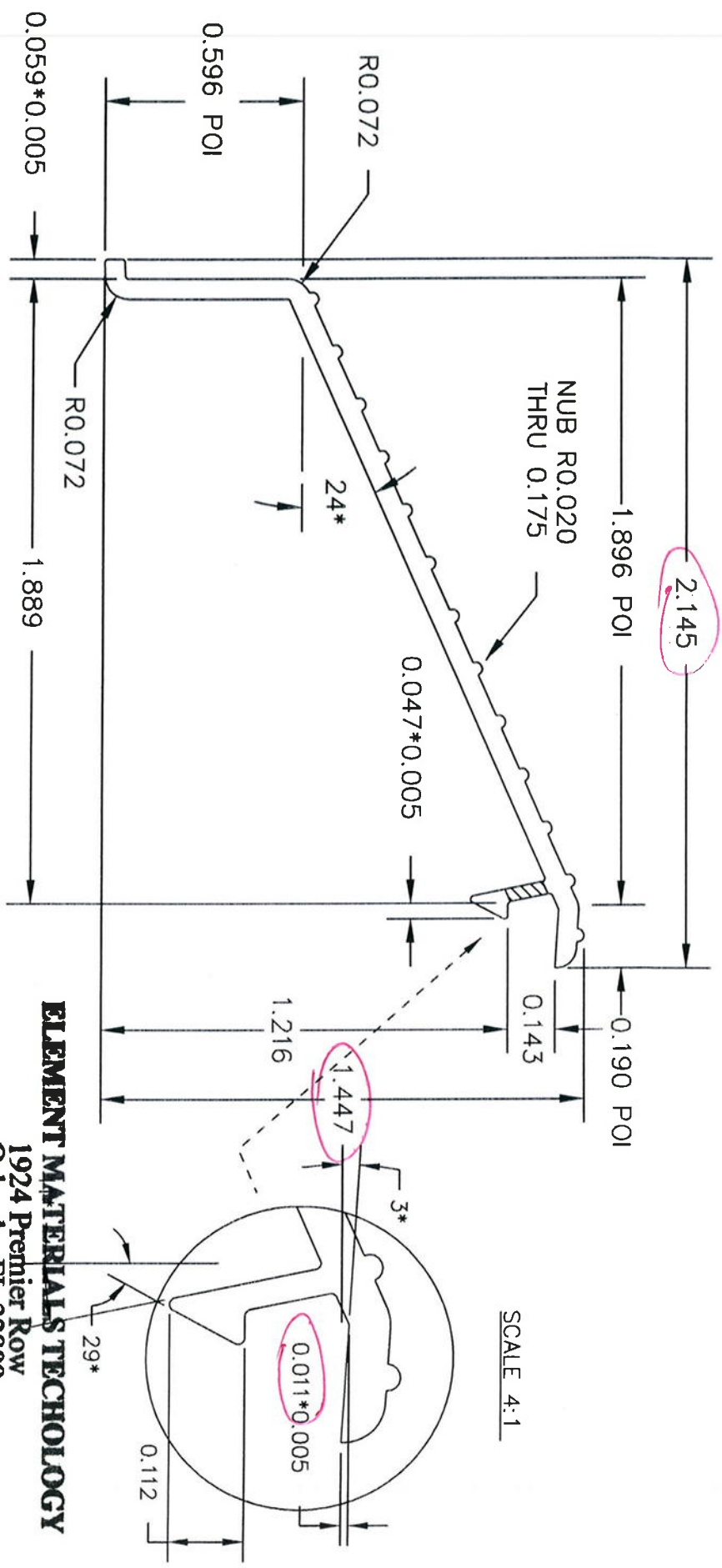
VINYL BUILDING PRODUCTS LLC

AREA = .359 sq. in.
WT/FT = .431 lb.
PERIM. = 11.200 in.
FACTOR = 26

TOLERANCES (EXCEPT AS NOTED)
AA STANDARDS

REV	BY	DATE	DESCRIPTION
-	-	-	-

DRAWN	RJK	DATE	11-30-05	APPVD		MAT'L	NOTE 1	SCALE	FULL
RAIL INSERT-SIDE ADJUST ROLLER 10300152									



SCALE 4:1

EXPOSED SURFACE
ACTUAL SIZE

ESP NO. ESP0091402-7
Date Verified: 4/20/12
Verified By: [Signature]

ELEMENT MATERIALS TECHNOLOGY
1924 Premier Row
Orlando, FL 32809

- NOTES:
1. ALL UNSPECIFIED RADII ARE 0.010.
 2. WALL THICKNESS.
 3. PAINT WITH ALCOA, PPG COLOR UC73603, POLYCRON WHITE.



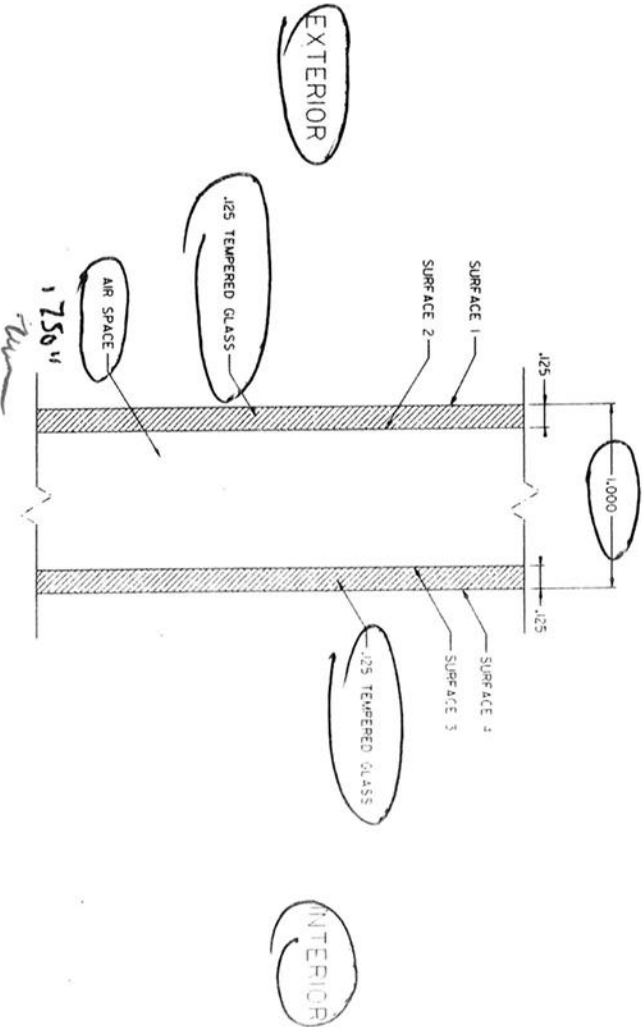
Vinylime®

VINYL BUILDING PRODUCTS INC.

AREA = 0.195
WEIGHT = 0.229 lb/ft

TOLERANCES (EXCEPT AS NOTED)
? .010 [0.25]

A	MB	2/13/03	ADDED NOTE 3.
REV	BY	APPVD	DATE
			CHANGE
DRAWN	M/G	DATE	APPVD
		12/26/00	
SILL COVER. SLIDER		MAT'L	SCALE
		6061-T6 6105-T5	2/1
A			10300171



ELEMENT MATERIALS TECHNOLOGY

1924 Premier Row
Orlando, FL 32809

ESP NO. ESP009160P-7 A-P-8

Date Verified: 4/20/12

Verified By: [Signature]

OVERALL 1.750"
1/8" TEMPERED GLASS

CONFIDENTIAL		UNLESS OTHERWISE SPECIFIED	
UNPUBLISHED WORK © 2008 DECEUNINCK NORTH AMERICA		TOL AND ANGLES 2 PL. + 0.005" AND TOL PER TASK WORK 1993	
THIS DOCUMENT CONTAINS PROPRIETARY AND CONFIDENTIAL INFORMATION. IT IS TO BE USED ONLY FOR THE PROJECT AND NOT TO BE REPRODUCED OR DISCLOSED TO ANY OTHER PARTY WITHOUT THE WRITTEN CONSENT OF DECEUNINCK NORTH AMERICA. DECEUNINCK NORTH AMERICA RESERVES THE RIGHT TO CHANGE THE DESIGN DRAWING AND ANY ASSOCIATED DOCUMENTS.		HARD ANGLE PROJECTION	
DATE	BY	DATE	BY
04/20/12	[Signature]	04/20/12	[Signature]
REVISION	DATE	REVISION	DATE
1	04/20/12	1	04/20/12
deceuninck NORTH AMERICA		deceuninck NORTH AMERICA	